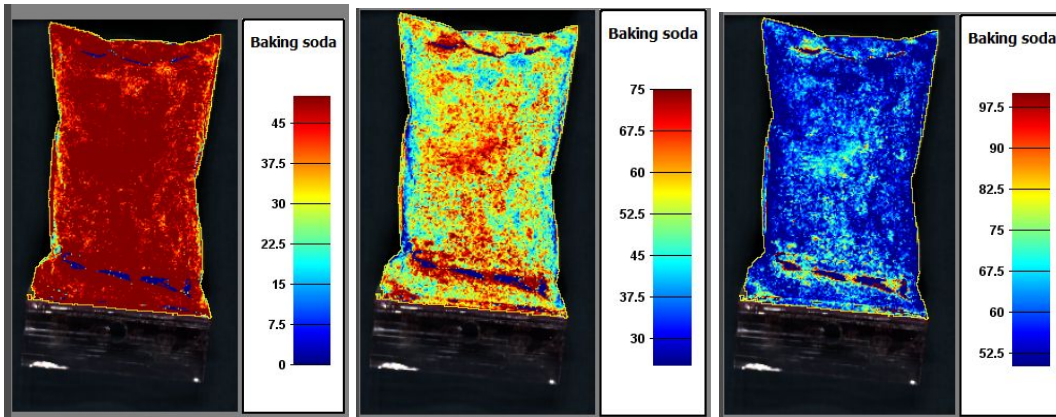


# Breeze - Workflow limits guide

This guide will show how to use limits to change the scale for the colors that are used to visualize the result

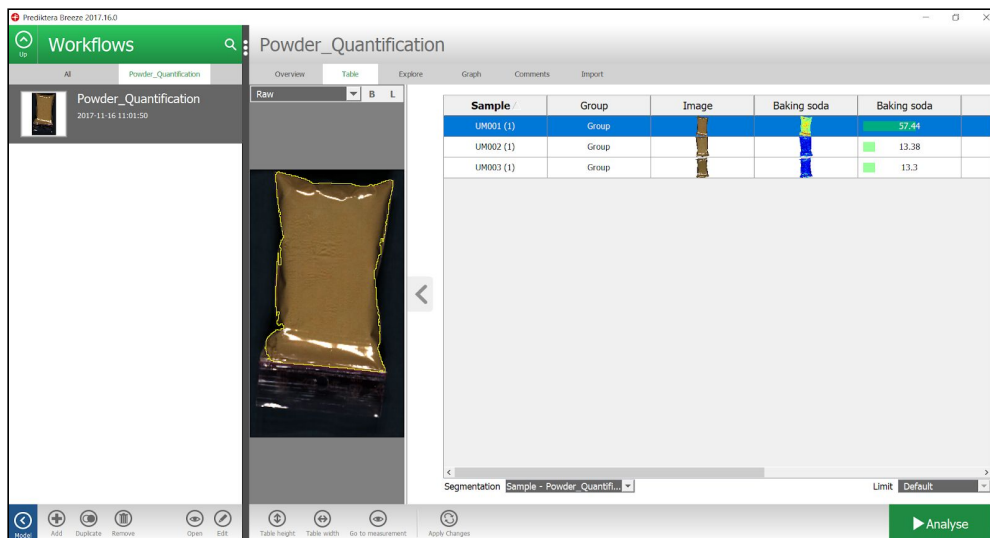
Note: Limit will only change the visualisations and will not affect the prediction results. To follow the example in this guide it's recommended to first go through ["Powder Quantification Tutorial"](#).



## Limit example with Powder Quantification image data

This section starts after creating a new Workflow with Record data using the Group “Unknown Mix” from Powder Quantification.

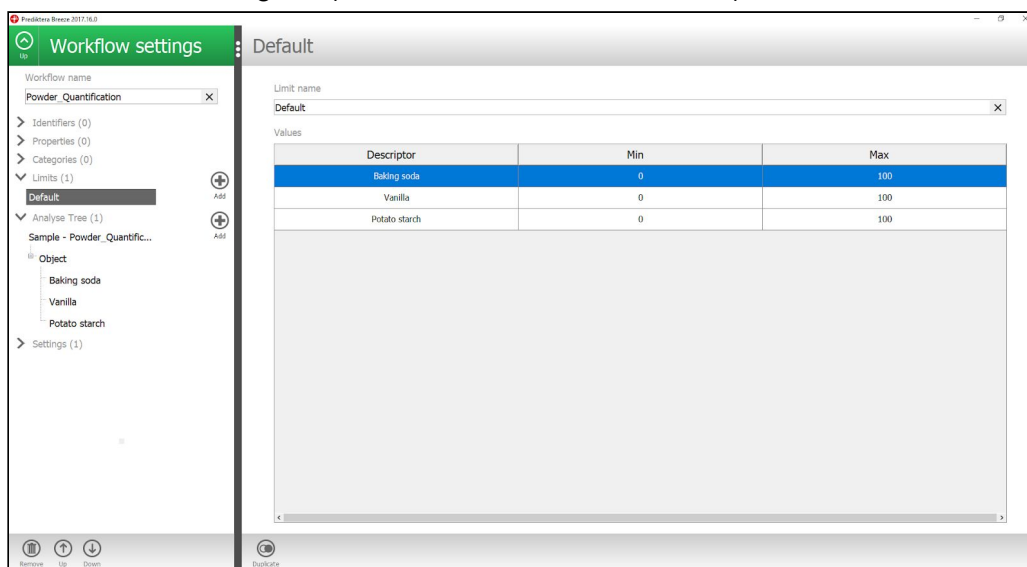
1. You should have the following view:



2. Press the Edit button



3. The default limits look like this. The limits are by default set by the lowest and highest values in the training set (in this case it was 0 and 100%).



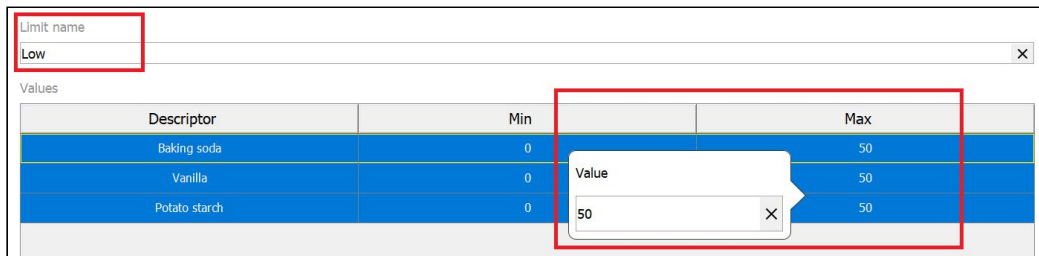
- Duplicate the default limit



- Change the “Limit name” to “Low” and press enter on your keyboard

Select all three rows and right click on the Max column

Enter value 50 for Max column and press enter

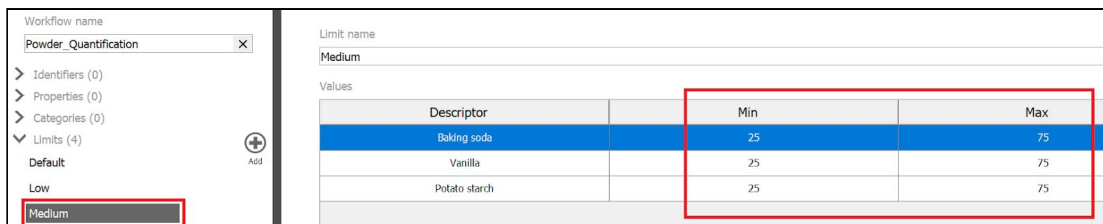


- Duplicate the limit

- Change the “Limit name” to “Medium”

Enter value 25 for “Min” column

Enter value 75 for “Max” column

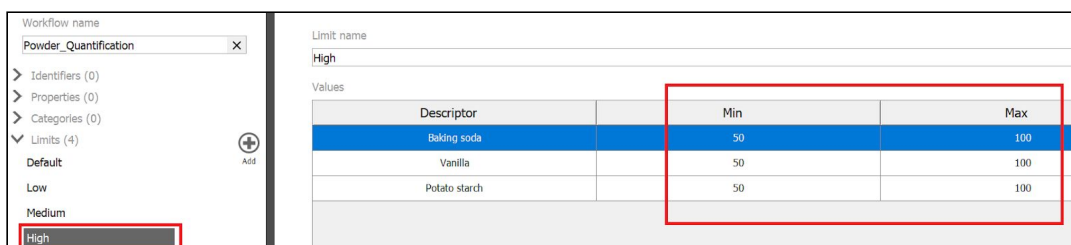


- Duplicate the limit

- Change the “Limit name” to “High”

Enter value 50 for “Min” column

Enter value 100 for “Max” column



10. Press Up button



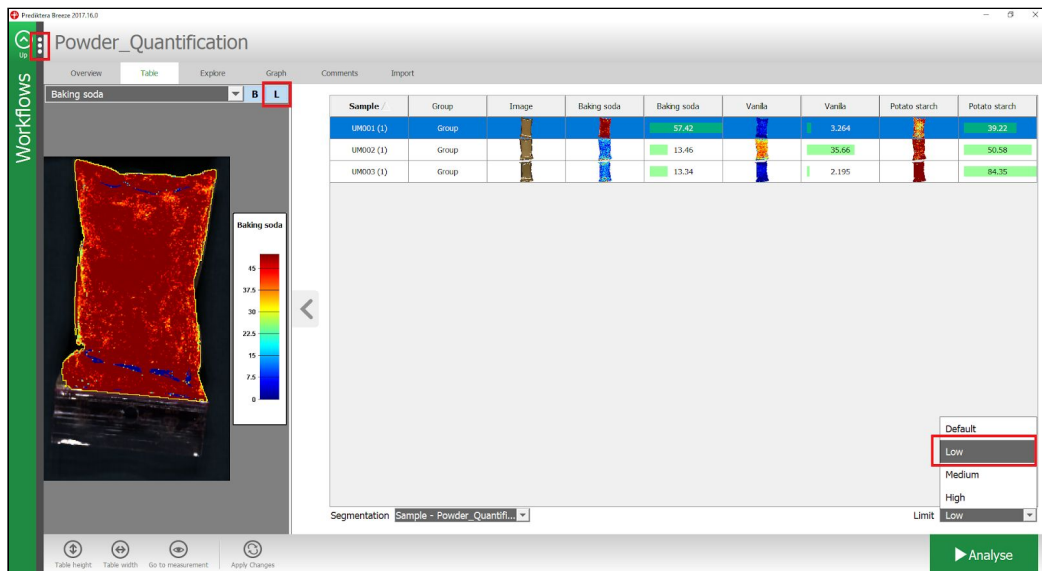
11. Expand the view by pressing the three dots

12. Click in the Table on the Baking soda column

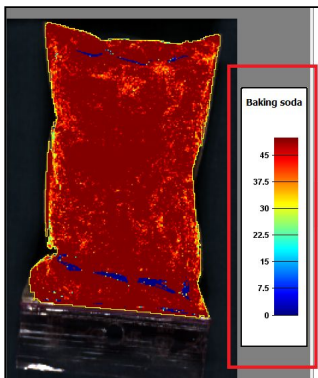
Add legend by pressing the “L” button the measurement preview

Then change the “Limit” from “Default” to “Low”

Click in the Table to look at the image with the new limits for Baking Soda, Vanilla and Potato Starch



Note that the limit also changed the “Min” and “Max” value for the legend



13. You can now try to change the limit to “Medium” and “High” and see the different visualization results.