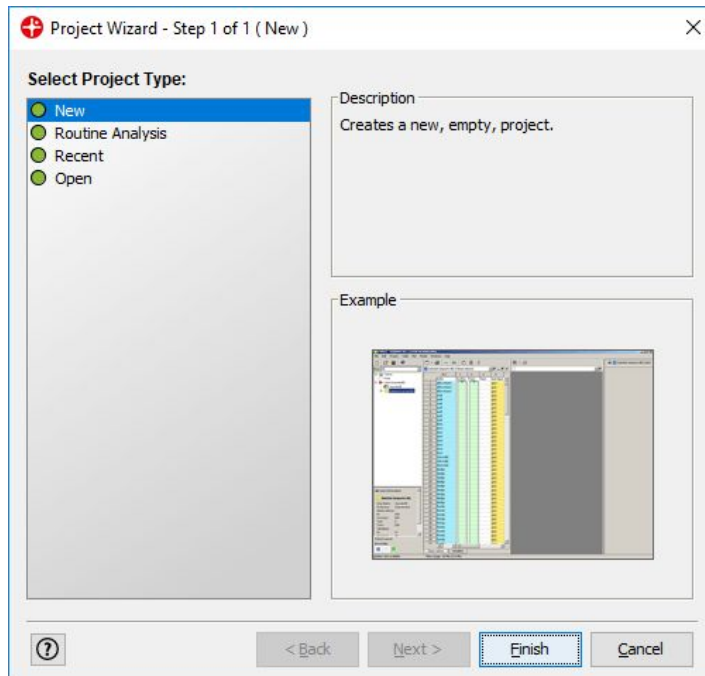


How to crop, reduce and export image-data (to .raw or .mat)

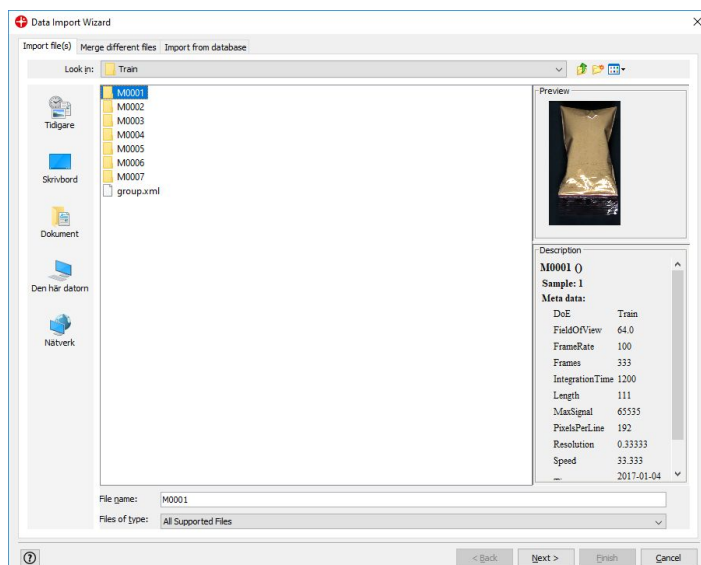
Step 1 - Start New Evince project

Click on “New” and and “Finish”



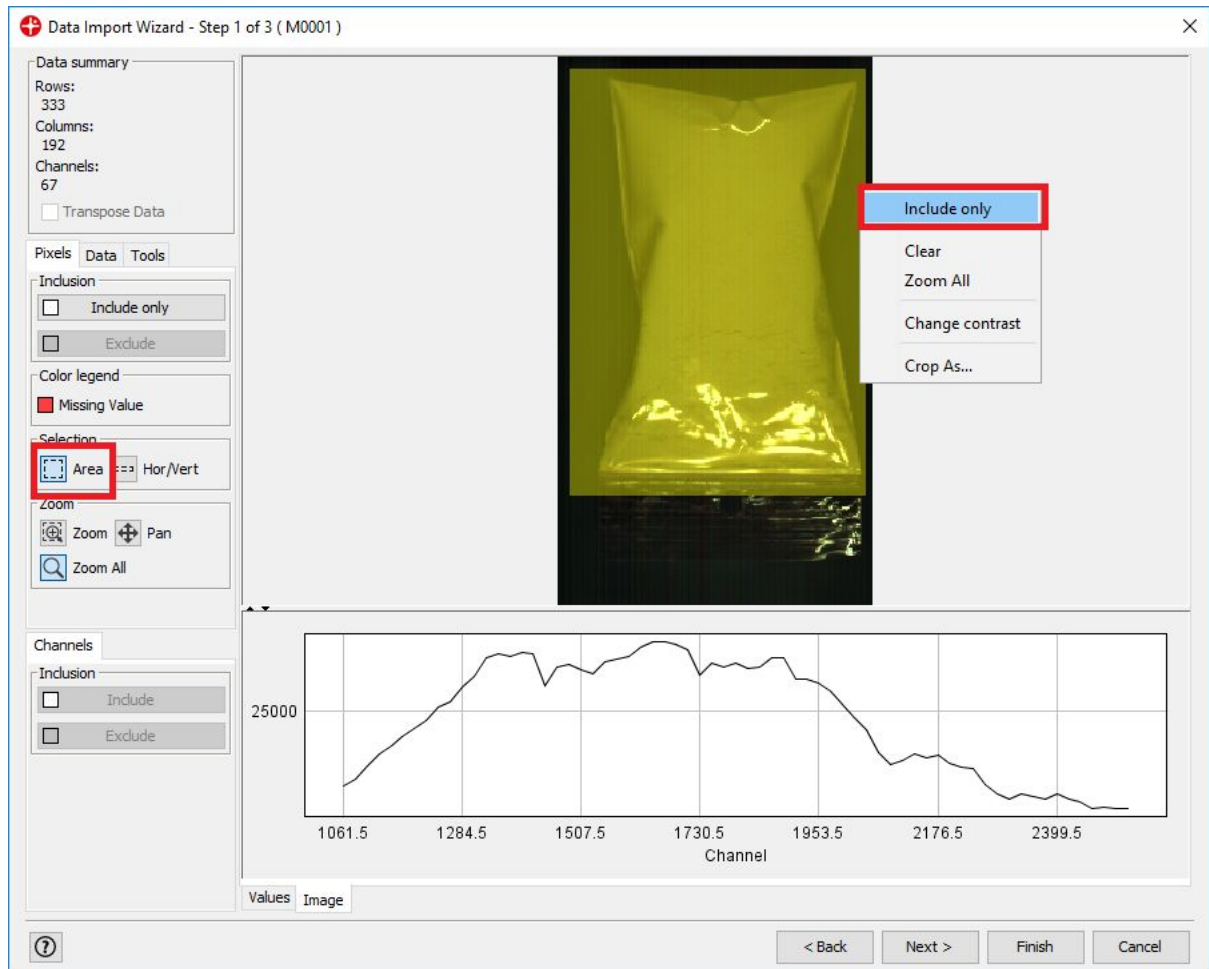
Step 2 - Select data file

Select data file and press “Next >” button



Step 3 - Crop data

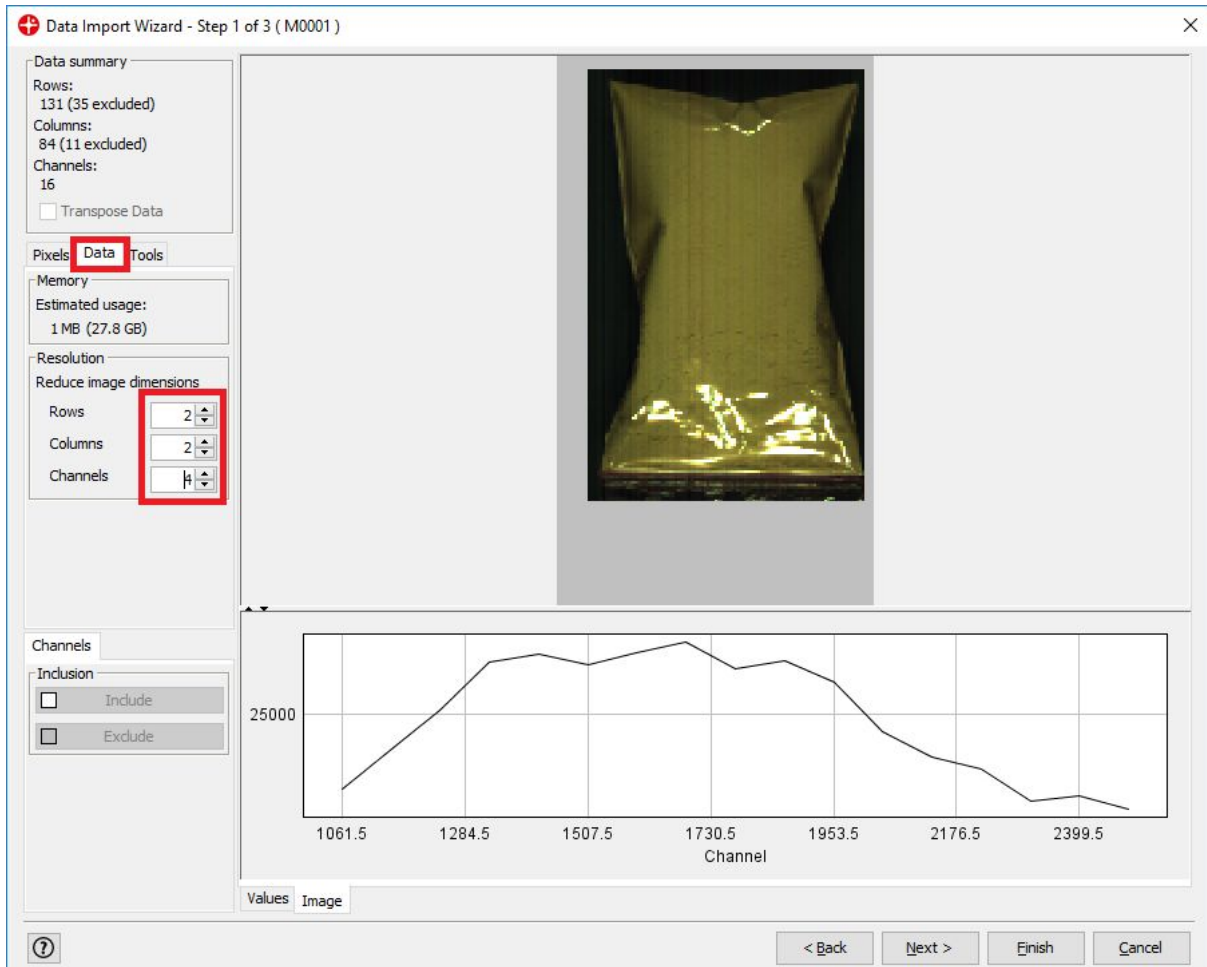
Select “Area” tool under “Selection” and select the area of interest. Right click on the area and select “Include only”.



Step 4 - Reduce data

In some case you want to reduce the data size of your image. You can reduce pixel rows and columns or image channels.

Click on “Data tab” and change the values for “Rows”, “Column” or “Channels”



The screenshot shows the 'Data Import Wizard' interface. On the left, the 'Data' tab is active, displaying 'Reduce image dimensions' with 'Rows' set to 2, 'Columns' set to 2, and 'Channels' set to 16. Below this, the 'Channels' section has 'Include' and 'Exclude' options. The main area shows a preview of a yellow bag. At the bottom, a line graph plots 'Values' against 'Channel' indices, with a peak around 1730.5. Navigation buttons '< Back', 'Next >', 'Finish', and 'Cancel' are at the bottom right.

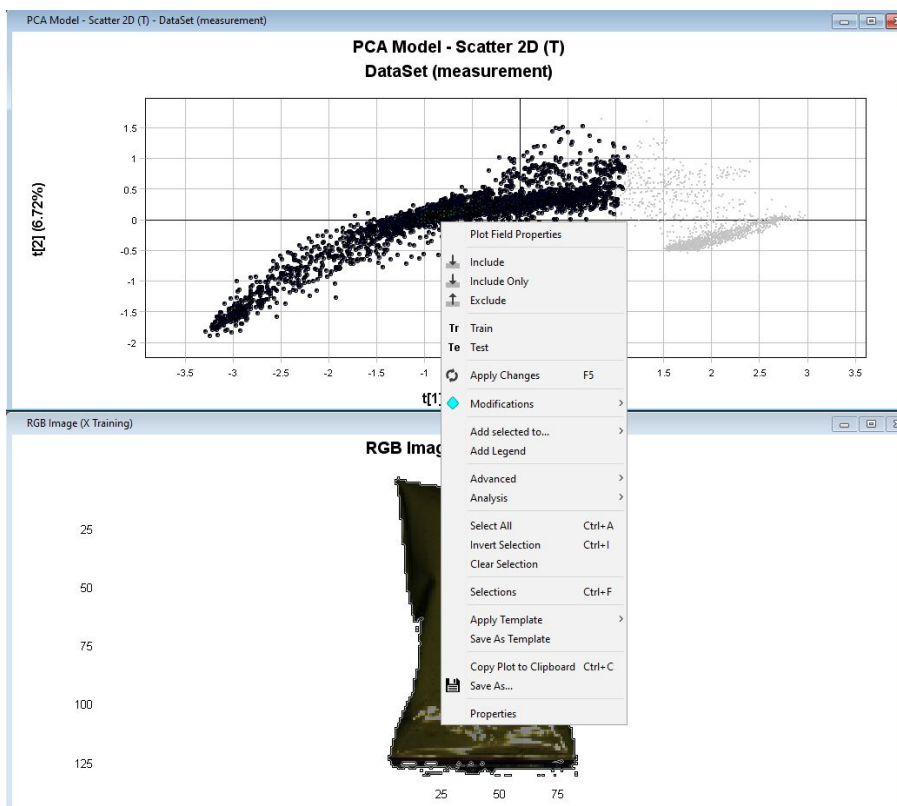
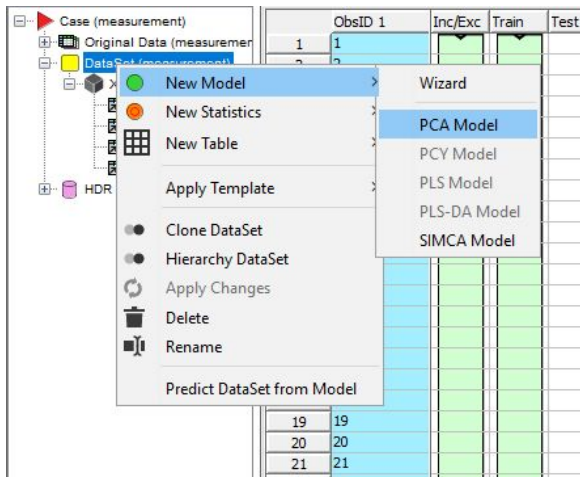
Press Finish to import data into Evince

Step 5 - Exclude background

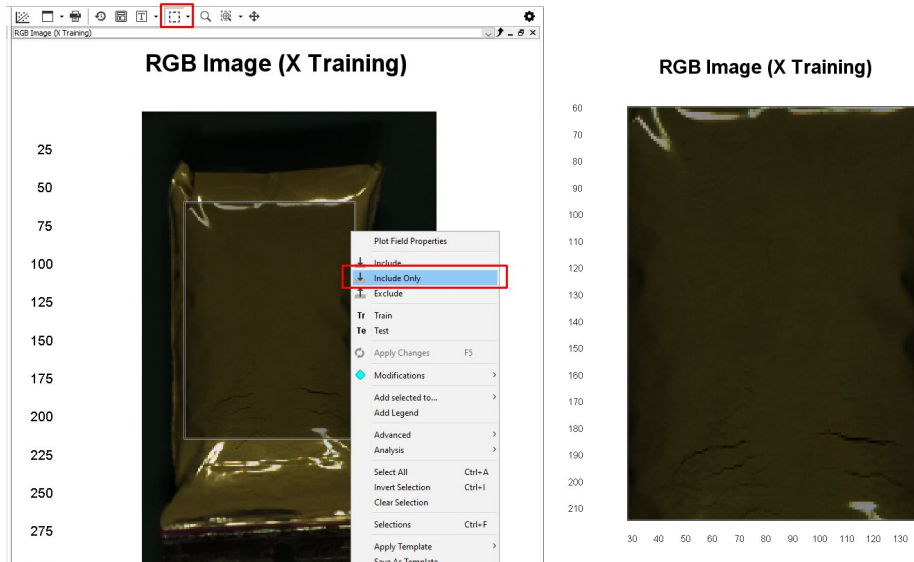
Before export you can for example exclude the background pixel of your image.

1. Right click on the “Data Set” and choose “New Model” and the “PCA Model”
2. In the PCA scatter 2D plot. Select the pixels corresponding to your Sample
3. Right click and choose “Include Only”

Note. The excluded pixels will be set to zero when exported to image file.

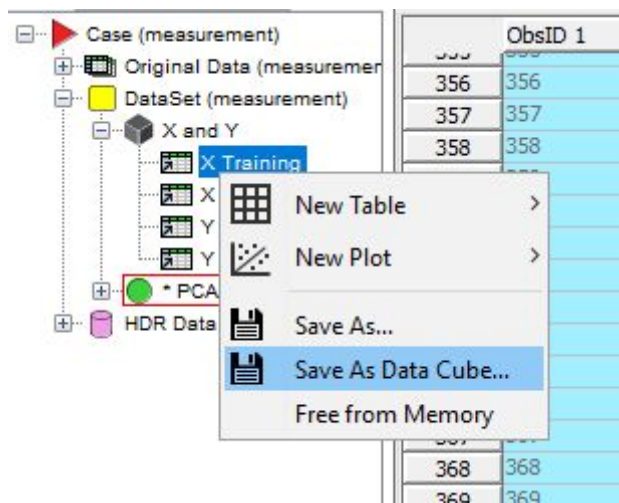


- Alternatively you can select the pixels you want to export in the image (change the selection tool to rectangle and then make the selection of the area of interest)



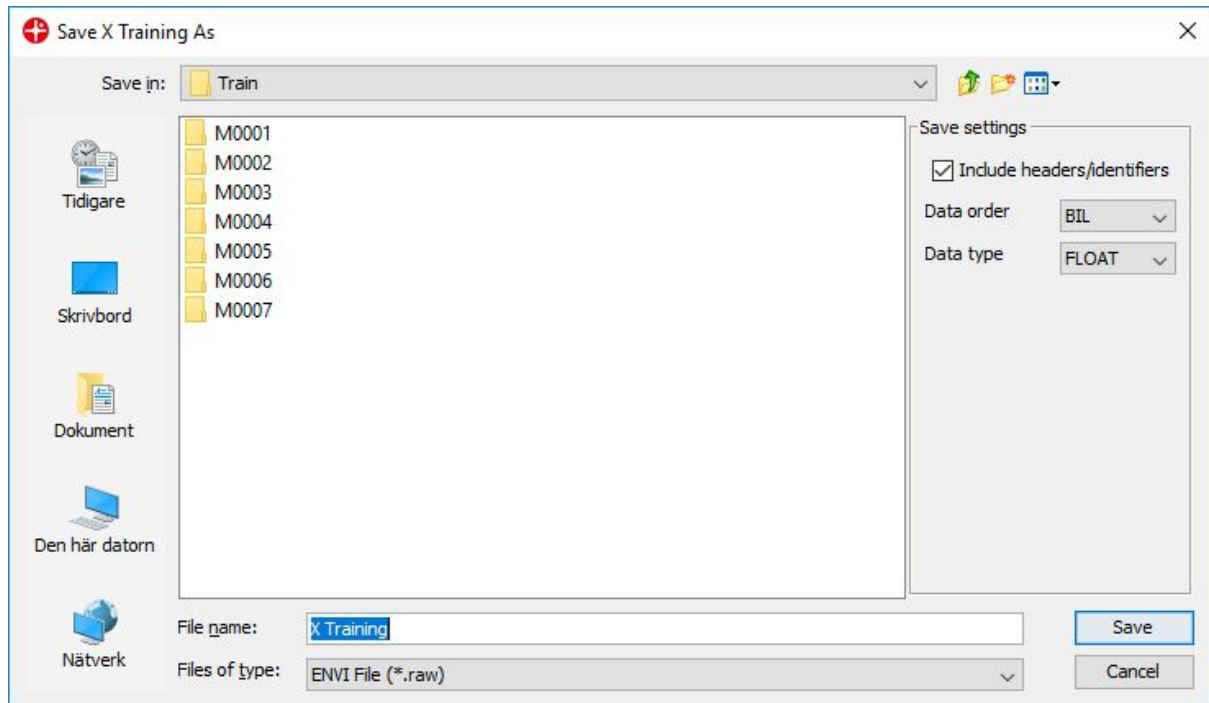
Step 6 - Export data

Right click on the “X Training” in your “Data Set” and choose “Save as Data Cube...”



Select “File name” of your exported file, the file type ENVI (.raw) or Matlab (.mat), and then choose Save.

Note. If data is not unit converted to reflectance or psuedo-absorance the “Data type” can be changed to for example “Short” to save disk space.



Good luck!